



CHARTwell

COLLEGIATE
HEIGHTS

retirement residence

95 Fauquier Avenue
Sault Ste. Marie • 705-256-4678

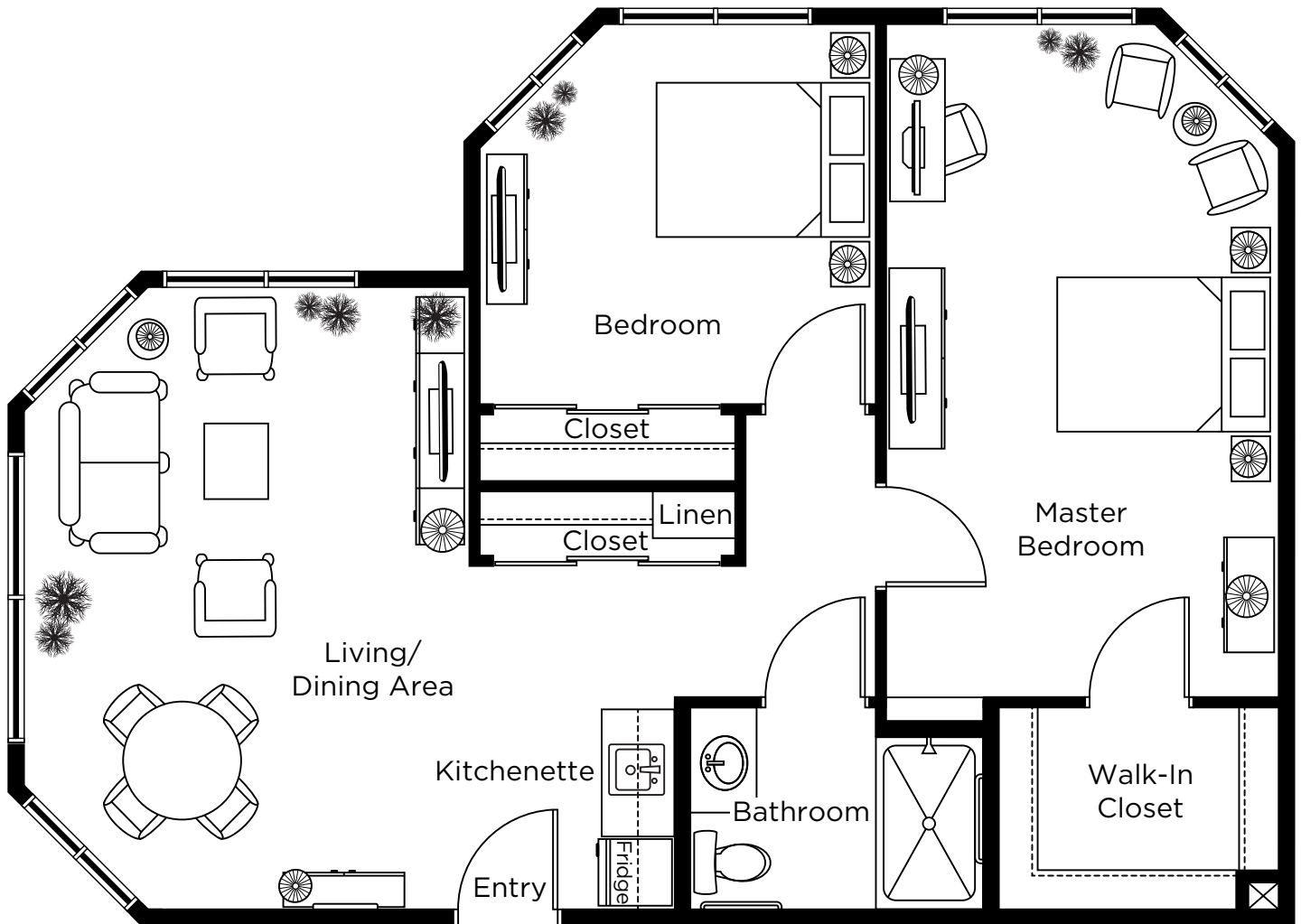
Suite Plans

TWO BEDROOM

ALL ILLUSTRATIONS ARE ARTIST'S CONCEPT PLANS AND SPECIFICATIONS MAY CHANGE WITHOUT NOTICE.
ACTUAL USABLE FLOOR SPACE MAY VARY FROM STATED FLOOR AREA. E & O.E.

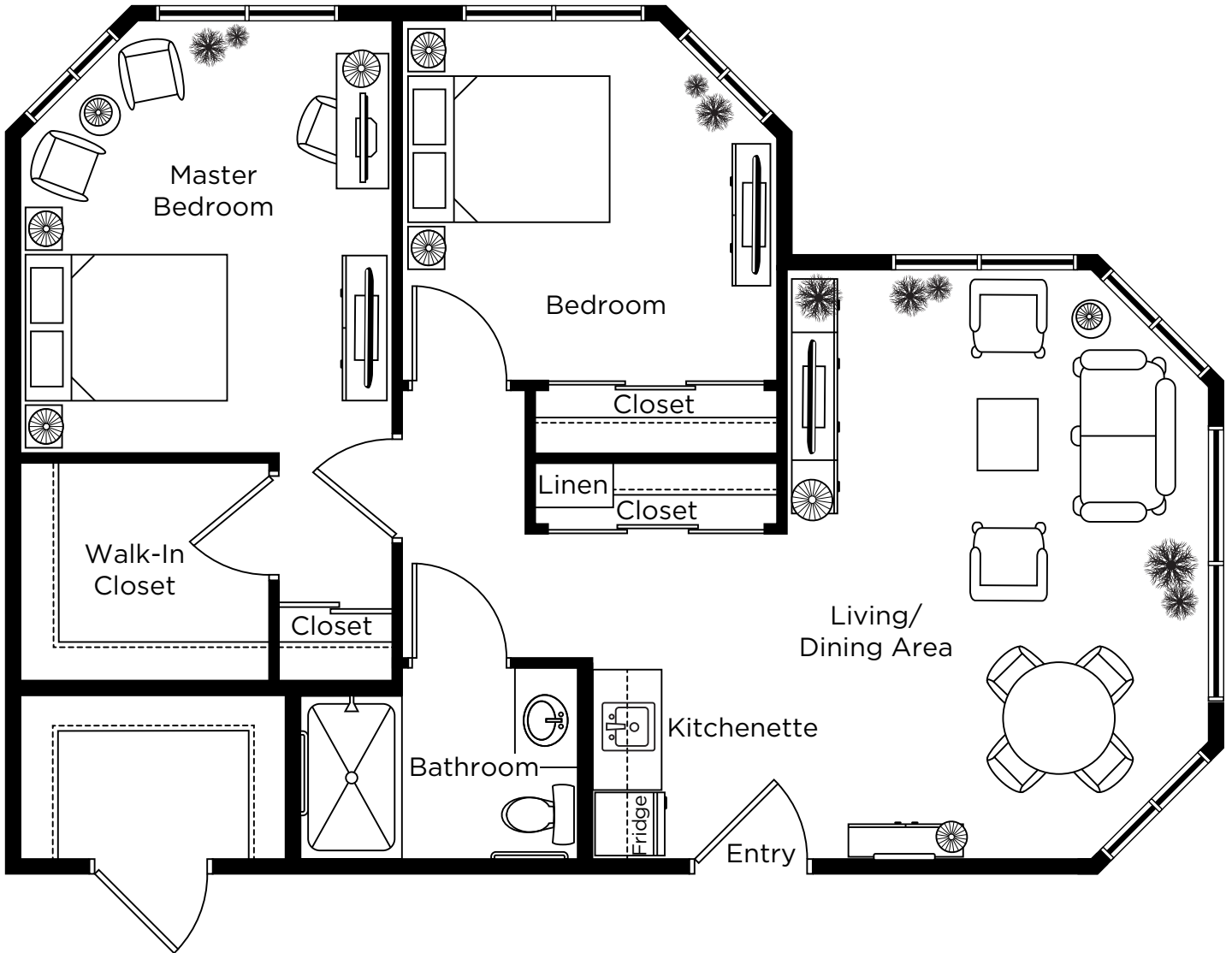
Two Bedroom

954 sq.ft.



Two Bedroom

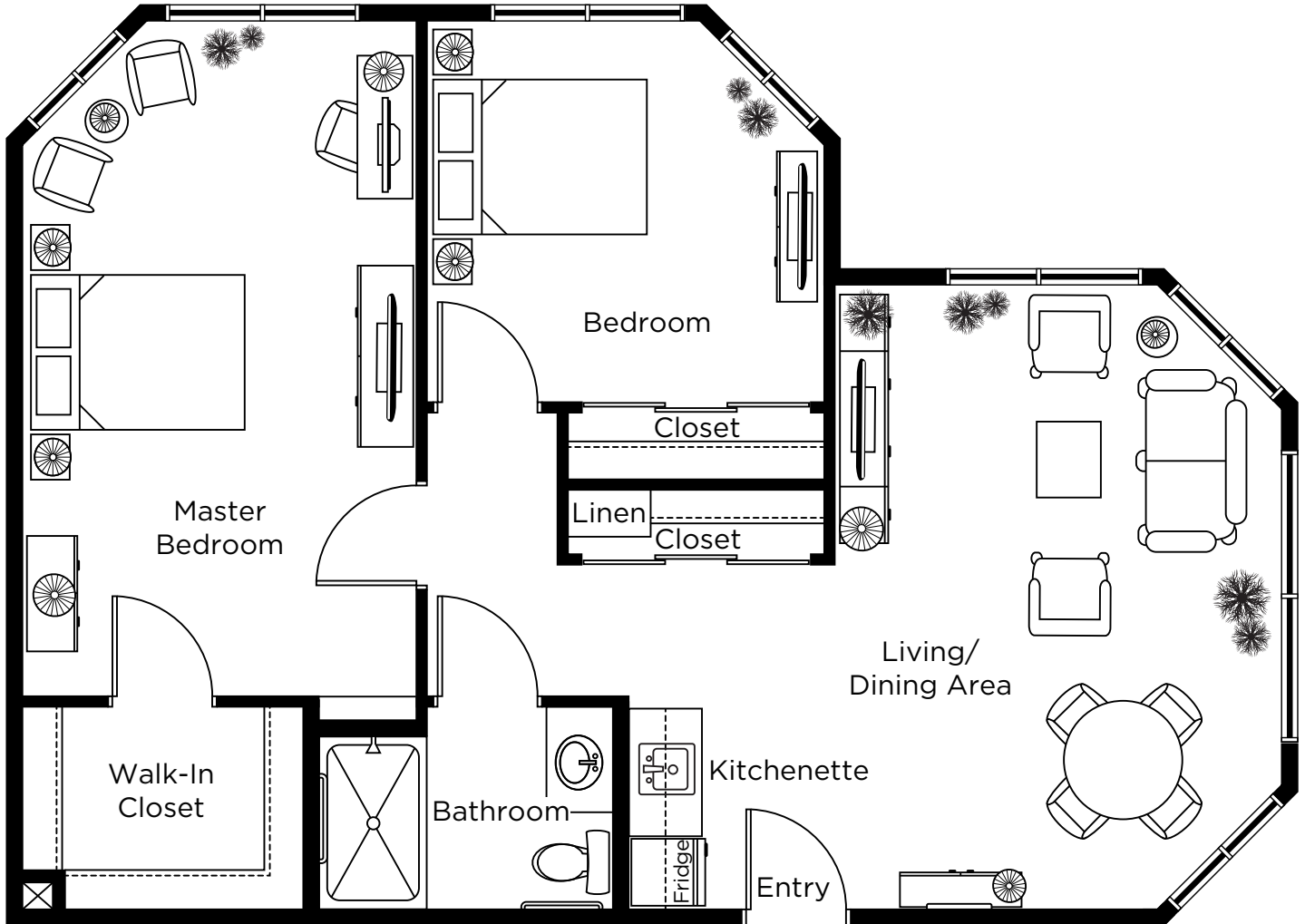
902 sq.ft.



ALL ILLUSTRATIONS ARE ARTIST'S CONCEPT PLANS AND SPECIFICATIONS MAY CHANGE WITHOUT NOTICE.
ACTUAL USABLE FLOOR SPACE MAY VARY FROM STATED FLOOR AREA. E & O.E.

Two Bedroom 2

954 sq.ft.



Suite A & D

732 sq.ft.

